

Name: \_\_\_\_\_

Phone: \_\_\_\_\_

School/Organization: \_\_\_\_\_

E-mail: \_\_\_\_\_

Dealer/Rep: \_\_\_\_\_

Sales Rep: \_\_\_\_\_ Quote: \_\_\_\_\_

# STOR-EDGE™

## MULTI-PURPOSE CARTS

### STANDARD FEATURES:

- Available in wood or laminate finishes
- Full extension glides on all drawers
- Black wire pull handles
- 110° Euro hinges on doors
- Weight racks and j-hooks provided where applicable
- 4" Heavy duty casters
- Cabinets ship fully assembled, except for casters



SR-005 (Front)



SR-009 (Front)

### CART CONFIGURATIONS:

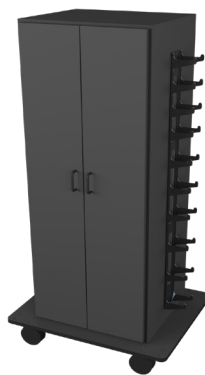
SR-001 (Front)



SR-001 (Back)



SR-002 (Front)



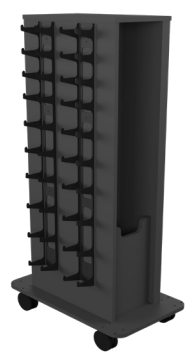
SR-002 (Back)



SR-003 (Front)



SR-003 (Back)



#### SR-001

30"W x 18"D x 72"H

Front: slatwall & band dispensers

Back: slatwall

Sides: weight racks, (9) 4" double hooks, & (10) j-hooks

QTY: \_\_\_\_\_



#### SR-002

30"W x 24"D x 61"H

Front: doors with (3) shelves

Back: slatwall

Sides: weight racks, (4) 4" double hooks, & (10) j-hooks

QTY: \_\_\_\_\_



#### SR-003

30"W x 18"D x 60"H

Front: slatwall

Back: weight racks

Right side: band dispensers

Left side: storage compartment, (4) 4" double hooks, & (10) j-hooks

QTY: \_\_\_\_\_

### OPTIONS:



#### SR-WK1 - Weight Kit 1

(2) 1-10lbs dumbbell sets

(1) 16pc hugger weight set

(1) Theraband band set

QTY: \_\_\_\_\_



#### SR-MI-001 - Mirror

19.75"W x 65.5"H (back side)

QTY: \_\_\_\_\_

### OPTIONS:



#### SR-WK2 - Weight Kit 2

(2) 1-10lbs dumbbell sets

(1) 16pc hugger weight set

QTY: \_\_\_\_\_



#### TSFO-FHLD

Flush mount handles on large doors

QTY: \_\_\_\_\_

### OPTIONS:



#### SR-WK3 - Weight Kit 3

(2) 1-10lbs dumbbell sets

(1) 16pc hugger weight set

(1) Theraband band set

(1) 1-3lbs weight bar set

QTY: \_\_\_\_\_



Toll Free: 800.743.7738 | Fax: 605.882.8398

phsmedicalsolutions.com

Name: \_\_\_\_\_

Phone: \_\_\_\_\_

School/Organization: \_\_\_\_\_

E-mail: \_\_\_\_\_

Dealer/Rep: \_\_\_\_\_

Sales Rep: \_\_\_\_\_ Quote: \_\_\_\_\_

# STOR-EDGE™ MULTI-PURPOSE CARTS

SR-004 (Front)



SR-004 (Back)



- SR-004**  
24"W x 24"D x 61"H  
Front: band dispensers  
Back: slatwall  
Sides: weight racks, (3) 4" double hooks, & (6) j-hooks  
QTY: \_\_\_\_\_

SR-005 (Front)



- SR-005**  
32"W x 32"D x 72"H  
Front: cubbies, drop down desk with key lock, (3) 8" drawers  
Back: band dispensers & slatwall  
Right side: mirror  
Left side: weight racks, (4) 4" double hooks, & (12) j-hooks  
QTY: \_\_\_\_\_

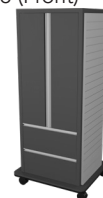
**OPTIONS:**

- SR-WK3 - Weight Kit 3**  
(2) 1-10lbs dumbbell sets  
(1) 16pc hugger weight set  
(1) Theraband band set  
(1) 1-3lbs weight bar set  
QTY: \_\_\_\_\_

**TSFO-FHLD**

- Flush mount handles on large doors  
QTY: \_\_\_\_\_

SR-006 (Front)



SR-006 (Back)



- SR-006**  
36"W x 36"D x 73"H  
Front: doors with (2) shelves & (2) 10" drawers  
Back: weight racks  
Sides: slat wall, (4) 4" double hooks, & (12) j-hooks  
QTY: \_\_\_\_\_

\*\*Only available in solid wood and with flush mount handles.

**OPTIONS:**

- SR-WK3 - Weight Kit 3**  
(2) 1-10lbs dumbbell sets  
(1) 16pc hugger weight set  
(1) Theraband band set  
(1) 1-3lbs weight bar set  
QTY: \_\_\_\_\_

SR-008 (Front)



SR-008 (Back)



- SR-008**  
46"W x 26"D x 43"H  
Front: (5) 18"W drawers & (1) 18"W door  
Back: slatwall  
Right side: storage compartment, (4) 4" double hooks, & (12) j-hooks  
Left side: weight racks  
QTY: \_\_\_\_\_

**OPTIONS:**

- TSFO-FHD**  
Flush mount handles on doors  
QTY: \_\_\_\_\_
- TSFO-FHDR**  
Flush mount handles on drawers  
QTY: \_\_\_\_\_

SR-009 (Front with flush mount handles)



SR-009 (Back)



- SR-009**  
36"W x 36"D x 73"H  
Front: doors with (2) shelves & (2) 10" drawers  
Back: weight racks  
Sides: slat wall, (4) 4" double hooks, & (10) j-hooks  
QTY: \_\_\_\_\_

**OPTIONS:**

- SR-WK3 - Weight Kit 3**  
(2) 1-10lbs dumbbell sets  
(1) 16pc hugger weight set  
(1) Theraband band set  
(1) 1-3lbs weight bar set  
QTY: \_\_\_\_\_

- SR-MI-009 - Mirror**  
26.5"W x 65.5"H (back side)  
QTY: \_\_\_\_\_

- TSFO-FHDR**  
Flush mount handles on drawers  
QTY: \_\_\_\_\_

- TSFO-FHLD**  
Flush mount handles on large doors  
QTY: \_\_\_\_\_

SR-010 (Front)



- SR-010**  
72"W x 25.5"D x 33"H  
Front: (2) sliding doors  
Back & sides: solid  
QTY: \_\_\_\_\_

**OPTIONS:**

- TSFO-FHD**  
Flush mount handles on doors  
QTY: \_\_\_\_\_

Name: \_\_\_\_\_

Phone: \_\_\_\_\_

School/Organization: \_\_\_\_\_

E-mail: \_\_\_\_\_

Dealer/Rep: \_\_\_\_\_

Sales Rep: \_\_\_\_\_ Quote: \_\_\_\_\_

# STOR-EDGE™ MULTI-PURPOSE CARTS

SR-011 (Front)



SR-012 (Front)



SR-013 (Front)



- SR-011**  
50"W x 24"D x 65"H  
(4) Cubbies  
(4) Double hooks in each compartment  
(2) Drawers  
(4) 4" Casters  
QTY: \_\_\_\_\_

- OPTIONS:**
- TSFO-FHDR**  
Flush mount handles on drawers  
QTY: \_\_\_\_\_

- SR-012**  
48"W x 20"D x 64"H  
(4) Cubbies  
(4) Double hooks in each compartment  
(2) Drawers  
4" Toe-kick  
QTY: \_\_\_\_\_

- OPTIONS:**
- TSFO-FHDR**  
Flush mount handles on drawers  
QTY: \_\_\_\_\_

- SR-013**  
26"W x 24"D x 65"H  
(2) Cubbies  
(4) Double hooks in each compartment  
(1) Drawer  
(4) 4" Casters  
QTY: \_\_\_\_\_

- OPTIONS:**
- TSFO-FHDR**  
Flush mount handles on drawers  
QTY: \_\_\_\_\_

SR-014 (Front)



SR-016 (Front)



SR-016 (Back)



- SR-014**  
24"W x 20"D x 64"H  
(2) Cubbies  
(4) Double hooks in each compartment  
(1) Drawer  
4" Toe-kick  
QTY: \_\_\_\_\_

- OPTIONS:**
- TSFO-FHDR**  
Flush mount handles on drawers  
QTY: \_\_\_\_\_

- SR-016**  
32"W x 32"D x 72"H  
Front: cubbies, (4) 8" drawers  
Back: band dispensers, slatwall, & bar box storage compartment  
Right side: slatwall  
Left side: weight racks  
QTY: \_\_\_\_\_

- OPTIONS:**
- SR-WK3 - Weight Kit 3**  
(2) 1-10lbs dumbbell sets  
(1) 16pc hugger weight set  
(1) Theraband band set  
(1) 1-3lbs weight bar set  
QTY: \_\_\_\_\_
  - TSFO-FHDR**  
Flush mount handles on drawers  
QTY: \_\_\_\_\_



Toll Free: 800.743.7738 | Fax: 605.882.8398  
phsmedicsolutions.com

Name: \_\_\_\_\_

Phone: \_\_\_\_\_

School/Organization: \_\_\_\_\_

E-mail: \_\_\_\_\_

Dealer/Rep: \_\_\_\_\_

Sales Rep: \_\_\_\_\_ Quote: \_\_\_\_\_

# OPTIONS:

### STANDARD WOOD CHOICES:

-  Oak
-  Maple

### WOOD STAIN OPTIONS:

- MOD-Stain

### CUSTOM BRANDING:

- Decal Custom Small**  
Small Logo Decal  
(6"W x 6"H)




- Decal Custom Large**  
Large Logo Decal  
(12"W x 12"H)



### STANDARD STAIN CHOICES:

- |   |  |
|---|--|
| <input type="radio"/>  Warm Copper | <input type="radio"/>  Rustic Fall  |
| <input type="radio"/>  Deep Garnet | <input type="radio"/>  Warm Caramel |
| <input type="radio"/>  Fossil Gray | <input type="radio"/>  Black Beauty |
| <input type="radio"/>  Tungsten    | <input type="radio"/> Custom Wood Stain Color:<br>_____  |

### STANDARD LAMINATE CHOICES:

- |   |  |
|---|--|
| <input type="radio"/>  Oak           | <input type="radio"/>  Grey         |
| <input type="radio"/>  Maple         | <input type="radio"/>  Storm Grey   |
| <input type="radio"/>  Cherry Merlot | <input type="radio"/>  Harbor Grain |
| <input type="radio"/>  Espresso      | <input type="radio"/>  Black        |